

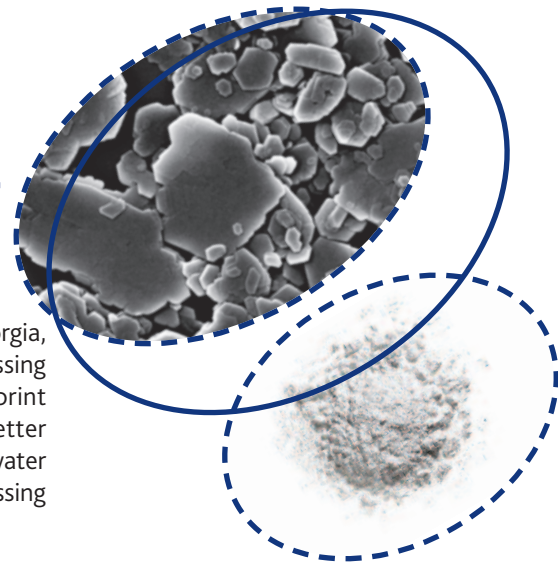
GREEN AS WHITE CAN BE 

CONTOUR™ XTREME

- Contour™ Xtreme is a unique coating kaolin that combines high brightness, high shape and fine particle size
- Designed to provide a unique combination of coverage, gloss and print quality in coated paper and board applications
- Can be used to improve coating strength versus ultrafine glossing clays and deliver cost savings through reductions in binder and thickener

www.imerys-kaolin.com

IMERY'S KAOLIN IS THE GLOBAL LEADER IN HIGH QUALITY SHAPE ENGINEERED FINE KAOLINS



Contour™ Xtreme is a unique fine, high brightness, shape engineered kaolin produced in Georgia, USA. It provides synergy with carbonates, combining the benefits of platy clays and fine glossing clays. You can achieve superior gloss, coverage, brightness, strength, stiffness and print performance in coated paper and coated board. The structured coating design offers better optical synergy, replacing expensive pigments like TiO₂ and plastic pigment. The increased water retention in the coating allows you to reduce binder and thickener compared to ultrafine glossing clays. The platy particles in the coating also improve sheet stiffness.

In light weight coated papers, Contour™ Xtreme will outperform standard delaminated or #1 clays where coating coverage is a key driver for sheet gloss, smoothness and opacity. In coated board grades, Contour™ Xtreme in the topcoat will reduce binder, improve smoothness and reduce cracking at the fold. The improved physical coverage will also allow reductions in TiO₂ in coated board grades with a darker base sheet brightness.

Contour™ Xtreme HS is a higher solids version of Contour™ Xtreme, and is recommended for coated papers where high solids and high coater speeds are used. It works very well in replacing ultrafine glossing clays, while providing the same benefits of coverage optical synergy and binder demand.

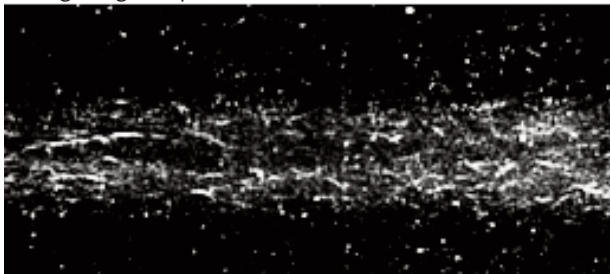
COMPARISON OF CONTOUR XTREME WITH UF HIGH BRIGHT CLAY IN A BOARD TOPCOAT

	UF HB Glossing Clay	Contour Xtreme (lower latex/CMC)
Solids (%)	67.2	68.1
Brookfield 100rpm Viscosity (mPa-s)	1908	1988
Paar Physcia 13,000s ⁻¹ Viscosity (mPa-s)	80	105
Sheet gloss (%)	51	50
PPS-1000 (µm)	1.38	1.26
Brightness (-UV)	76.2	77.4
Brightness (+UV)	83.3	85.1
Whiteness (+UV)	93.7	96.5
Offset print gloss	82	81

Additive	Parts
GCC 95	75
Kaolin	25
Latex Binder	14/12
CMC Thickener	0.4/0.28
PVOH	0.4
OBA	0.4

COATING STRENGTH IMPROVES CRACKING AT THE FOLD

UF High Bright Topcoat



Contour Xtreme Topcoat with lower binder and lower thickener



For further information about Contour™ Xtreme and Contour™ Xtreme HS, please contact your Imerys sales representative who will be able to assist you.

MORE INFORMATION

Imerys Kaolin

100 Mansell Court East - Suite 300 - Roswell - Georgia - USA | Tel: +1 770 645 3300 | www.imerys-kaolin.com

Although the information in this document is believed to be accurate, it is presented without warranty of any kind and Imerys assumes no liability with respect to its use. No license to any intellectual property right is granted or implied. Statements or suggestions concerning possible use are made without representation or warranty that any such use is free of patent infringement, and are not to be construed as suggestions or inducements to infringe any patent.

