

GREEN AS WHITE CAN BE



COLORING MASTERBATCH

APPLICATIONS

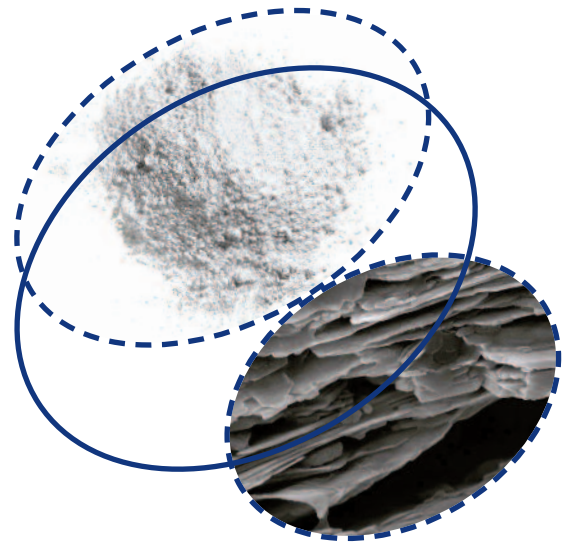
- TiO₂ extension for all coloring functional markets

www.imerys-kaolin.com

ABOUT IMERYS KAOLIN

We are a division of Imerys, a world leader of kaolins located in middle Georgia for over a hundred years. Our Kaolins are processed, refined and engineered to complement our customer's production processes, improving the quality and raising the performance of customers products. Imerys Kaolin offers Tailor-made solutions based on a understanding of the manufacturing process, production and business constraints of the Plastics industry.

Our range of products help to improve impact and tensile strength, warp resistance, electrical and chemical resistance, and enhances smoothness and brightness as well as TiO₂ extender to enhance the colors in your end product.



BENEFITS

- Better opacity
- Better clarity
- Less yellowish
- Better UV resistance
- Cost reduction

FORMULATION GUIDE

- Our team of technical service representatives can provide a formulation guide.

TYPICAL APPLICATIONS

- TiO₂ extension for all coloring functional markets

PERFORMANCE KAOLINS WORKING FOR YOU

Grade	Brightness (GE/ISO)	Mean particle size (d50)	Attributes
HYDRITE® UF90	90/88	0.2	Super ultrafine, very narrow PSD
HYDRITE® TS90	90/88	0.2	Super ultra fine hydrous clay for improved TiO ₂ spacing in white polyolefin masterbatch

MORE INFORMATION

Imerys Kaolin

100 Mansell Court East, Suite 300, Roswell, Georgia, USA, 30076 | Tel: +1 770 645 3300

kaolin.na@imerys.com | www.imerys-kaolin.com



Although the information in this document is believed to be accurate, it is presented without warranty of any kind and Imerys assumes no liability with respect to its use. No license to any intellectual property right is granted or implied. Statements or suggestions concerning possible use are made without representation or warranty that any such use is free of patent infringement, and are not to be construed as suggestions or inducements to infringe any patent.